

Looking ahead,  
going beyond expectations  
*Ahead > Beyond*



## Ego 2 slim - Circulators

Product Catalogue



# Ego 2 Slim U



## Simple and complete

Ego 2 slim is the basic version with the following communication features:

- 2 output relay
- Min/Max input
- 0-10V input

# Ego 2 Slim C



## Ready for everything

Enhanced communication version:

- 2 output relay
- Min/Max input
- 0-10V input
- 4-20mA input
- PWM input
- Modbus connection (RS485 e TCP/IP)
- Web server
- Bacnet

# Evolution never stops

Ego 2 slim flanged circulators now available in a two even more advanced version: Ego 2 slim U, more than basic version and, Ego 2 slim c, enhanced communication version for every needs.  
Same design, same performance, same features:

- Enhanced design for cooling better
- New cable glands for quick and easy electrical installation
- Redesigned display and electronics
- Limited dimensions and weight
- Two different communication options

## Technical data

Max. pressure:	10 bar
Liquid temperature:	-10 ÷ +110°C
Ambient temperature:	0 ÷ +40°C
Max. glycol quantity:	30%
	0,05 bar a 50°C
Minimum suction pressure:	0,4 bar a 80°C
	1,1 bar a 110°C
Insulation class:	F
Protection degree:	IP44
Voltage:	Monofase 1~230V

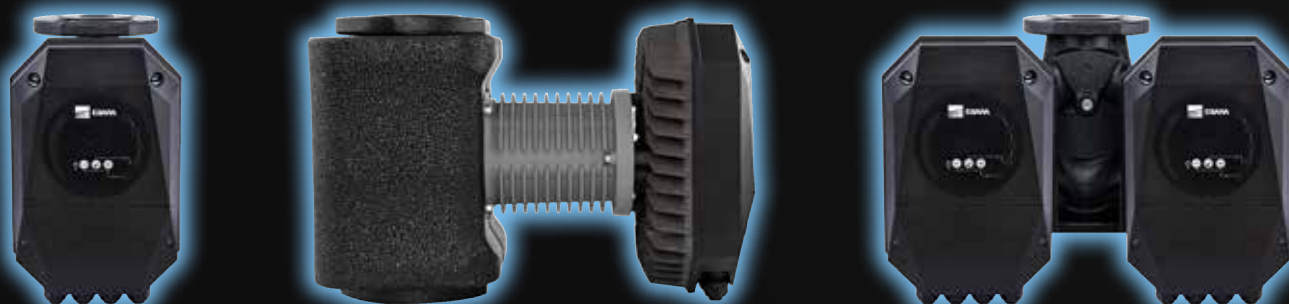
 Constant pressure

 Proportional pressure

 Fixed speed

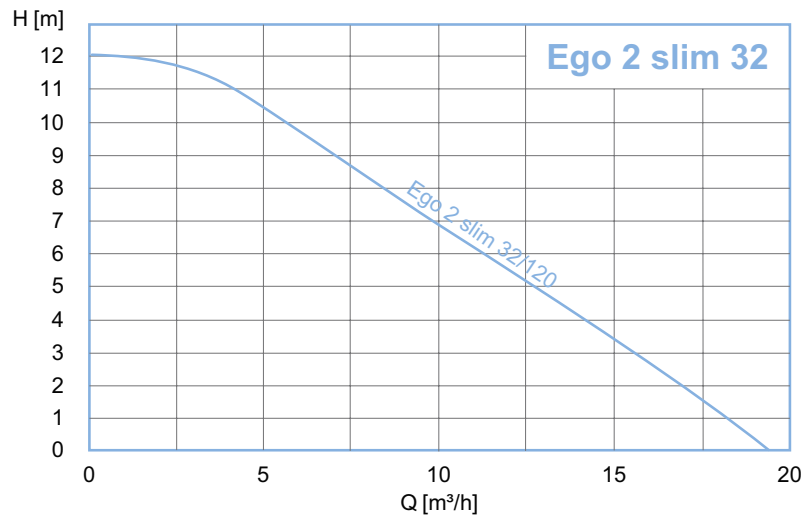
 Auto mode

 Night mode



## Ego 2 slim 32

Ego 2 slim 32/120 U  
Ego 2 slim 32/120 C



## Ego 2 slim 40

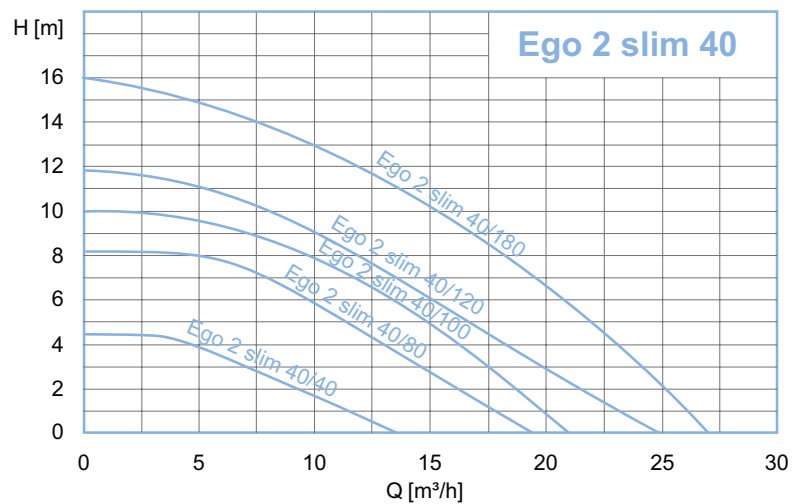
Ego 2 slim 40/40 U  
Ego 2 slim 40/40 C

Ego 2 slim 40/80 U  
Ego 2 slim 40/80 C

Ego 2 slim 40/100 U  
Ego 2 slim 40/100 C

Ego 2 slim 40/120 U  
Ego 2 slim 40/120 C

Ego 2 slim 40/180 U  
Ego 2 slim 40/180 C



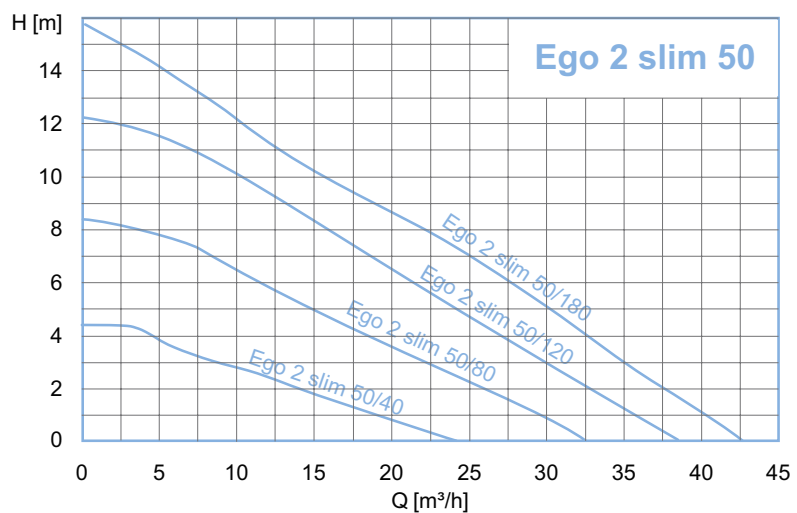
## Ego 2 slim 50

Ego 2 slim 50/40 U  
Ego 2 slim 50/40 C

Ego 2 slim 50/80 U  
Ego 2 slim 50/80 C

Ego 2 slim 50/120 U  
Ego 2 slim 50/120 C

Ego 2 slim 50/180 U  
Ego 2 slim 50/180 C



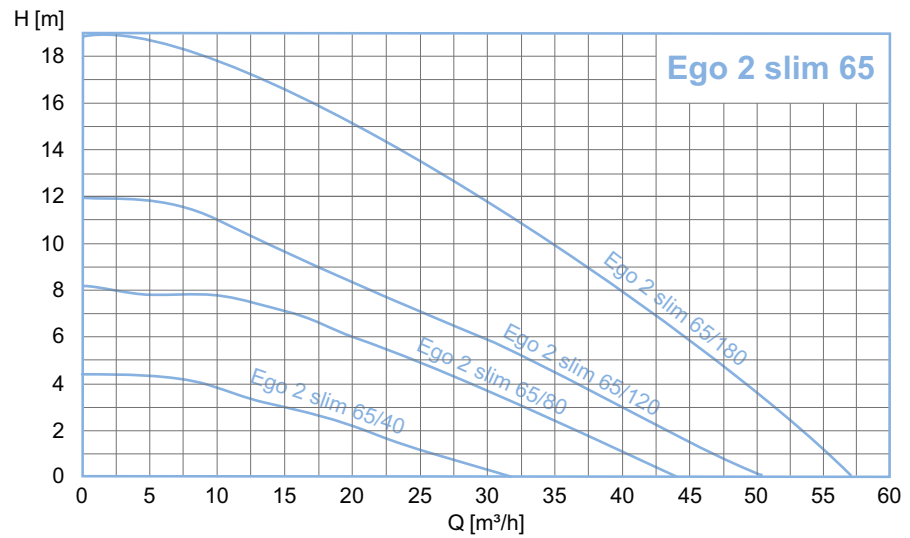
## Ego 2 slim 65

Ego 2 slim 65/40 U  
Ego 2 slim 65/40 C

Ego 2 slim 65/80 U  
Ego 2 slim 65/80 C

Ego 2 slim 65/120 U  
Ego 2 slim 65/120 C

Ego 2 slim 65/180 U  
Ego 2 slim 65/180 C



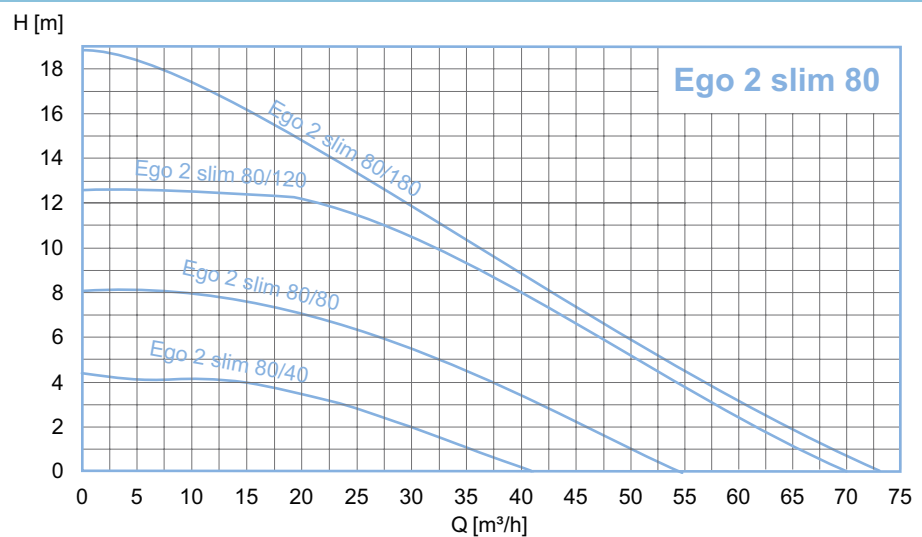
## Ego 2 slim 80

Ego 2 slim 80/40 U  
Ego 2 slim 80/40 C

Ego 2 slim 80/80 U  
Ego 2 slim 80/80 C

Ego 2 slim 80/120 U  
Ego 2 slim 80/120 C

Ego 2 slim 80/180 U  
Ego 2 slim 80/180 C



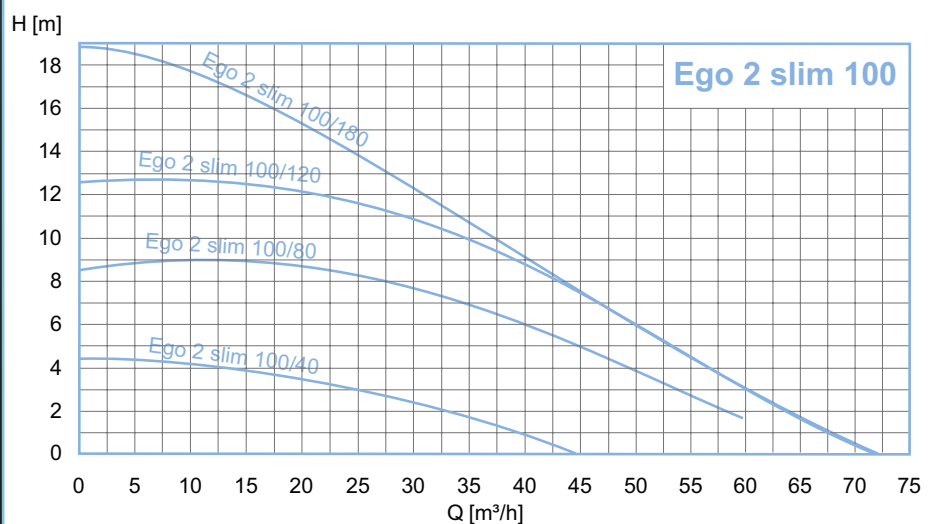
## Ego 2 slim 100

Ego 2 slim 100/40 U  
Ego 2 slim 100/40 C

Ego 2 slim 100/80 U  
Ego 2 slim 100/80 C

Ego 2 slim 100/120 U  
Ego 2 slim 100/120 C

Ego 2 slim 100/180 U  
Ego 2 slim 100/180 C





**EBARA Pumps Europe S.p.A.**

Via Torri di Confine 2/1 int. C  
36053 Gambellara (Vicenza), Italy  
Phone +39 0444 706811  
Fax +39 0444 405811  
ebarapumps.epe@ebara.com  
www.ebaraeurope.com

**EBARA Corporation**

11-1, Haneda Asahi-cho, Ota-ku,  
Tokyo 144-8510  
Japan  
Tel. +81 3 6275 7598  
Fax +81 3 5736 3193  
www.ebara.com

